

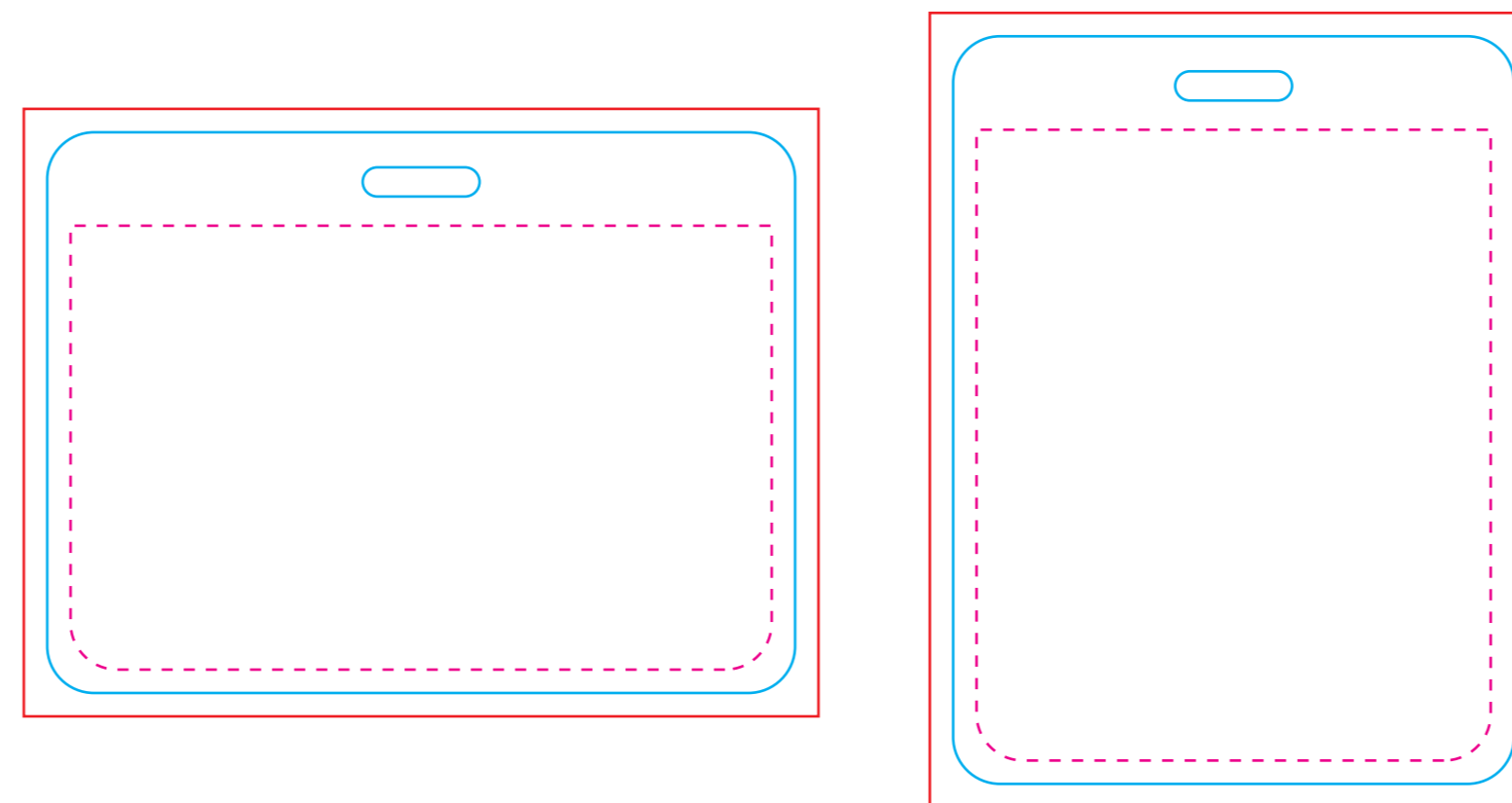
LRIS15M-MA4-BCP34 1 1/2" Dye-Sublimated Satin Ribbon Lanyard With 3" X 4" ID Badge

Print File // Actual size - If you need Variable Data, please provide your fonts with your file. Leave the text boxes opened in 1 file. We do not accept closed textboxes with different art in multiple files per imprint. You also must provide an Excel spreadsheet with all Variable data inside, labeled clearly. The machine will only read the variable data from an Excel spreadsheet and auto insert it into the open text boxes.

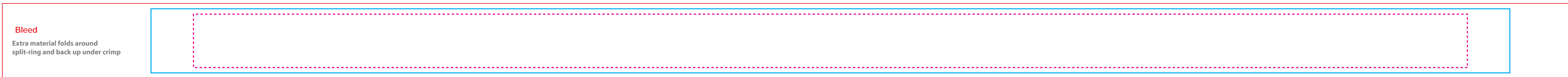
Bleed Area (background color/pattern) needs to be 1/8" outside outline

Label size is the actual outline

Standard Imprint area 1/8" inside the outline



Bleed Area Background Color/Pattern: 1 3/4" H
Ribbon Size: 1 1/2" H
Imprint Area: 1 1/4" H



lanyard end goes into crimp
↑
where beginning of imprint will line up on wearers Leftside

↑
at 15" of the imprint area is directly at the back of neck.

where beginning of imprint will line up on wearers Right side
↑
lanyard end goes into crimp